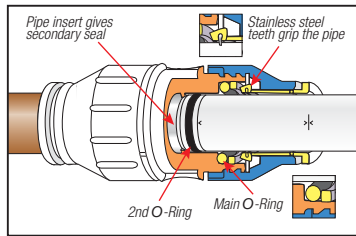
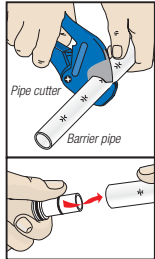


## How Speedfit Works

JG Speedfit Fittings have a unique grip then seal construction made up of a collet with stainless steel teeth to grip the pipe and an 'O' Ring to provide a permanent leak proof seal.



## Making a Good Connection



### PREPARING THE PIPE

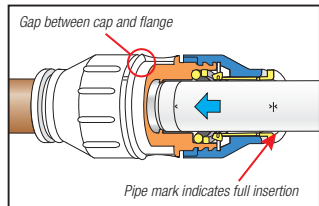
**Fittings and pipe should be kept clean bagged and undamaged before use.**

Ensure the pipe is free of score marks. Cut the pipe square. When using Speedfit pipe cut along an insertion mark >|< clearly shown on pipe. We recommend the use of JG Pipe Cutters.

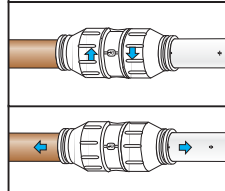
To prevent damage to the 'O' Ring remove all burrs and sharp edges. When connecting Speedfit pipe use a Superseal Pipe Insert. *The insert should only be used with Speedfit pipe.*

*A twisting motion will aid insertion.*

### TWIST AND LOCK FITTINGS

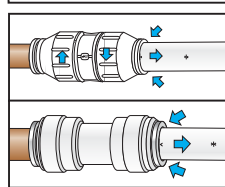


The fitting should be in the 'unlocked' position; shown by a small gap between the screwcap and the body flange. Push the pipe fully into the fitting, up to the pipe stop. If the Speedfit pipe has been cut correctly the insertion mark on the pipe will be level with the collet head. The 'O' Ring on the Superseal Pipe Insert provides a secondary seal against the bore of the fitting. A good connection has been made.



Twist the screwcap until it touches the body flange. This increases the 'O' Ring seal around the pipe and locks the pipe into position.

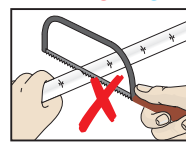
Ensure that the screw caps are in the locked position. Pull to check it is secure.



### TO DISCONNECT

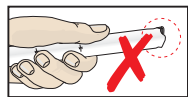
Ensure that the system is depressurised and that your mains connection is off. The screw cap on Twist and Lock fittings will need to be turned back to the unlocked position. Push the collet square against the face of the fitting by using fingers. With the collet held in position the pipe can be removed. The fitting can be used again without the need for replacement parts.

### WHAT NOT TO DO!



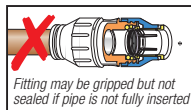
- Don't use hacksaws to cut the pipe or leave burrs on the end of the pipe.

- Don't use damaged or scored pipe.



- Don't forget to push the pipe fully into the fitting, past both the collet (gripper) and the 'O' Ring.

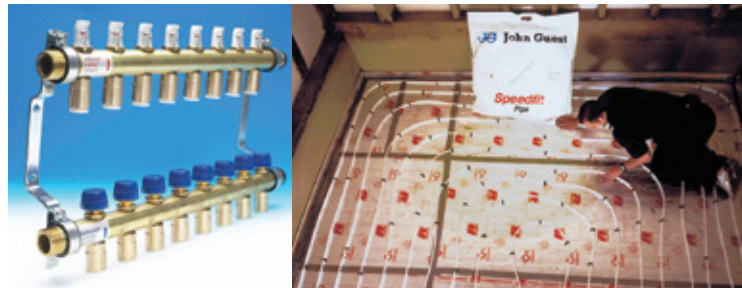
- Do not insert fingers into the fitting as the stainless steel teeth may cause injury.



## Warm Water Underfloor Heating



JG Speedfit warm water underfloor heating is a modern, energy saving solution for heating your new home or even just one room. With the increasing cost of electricity this solution delivers real savings by using solar, gas or heat pump technology to drive down the cost of heating your home versus traditional electrical based heating.



Controlled by room level touch screen thermostats there is no simpler or more cost effective way to heat your home. The solution is ideal for new builds or extensions to the home. If you would like a quote or more details on this solution please contact Speedfit Africa on the details below.

### Contact Us

For more information about JG Speedfit please visit the manufacturer's website - [www.johnguest.co.uk](http://www.johnguest.co.uk)

For information about JG Speedfit in South Africa please visit the Master Distributors website - [www.speedfitafrica.co.za](http://www.speedfitafrica.co.za)



# JG Speedfit®

The Ultimate Push-fit Solution for Plumbing

Can be used on Copper or Speedfit pipe

# DIY Plumbing Guide



SANS 21003

# What is JG Speedfit?



*JG Speedfit is a push fit system for normal domestic plumbing and warm water underfloor heating*

Simply pushing a pipe into a fitting produces a permanent leak proof connection. A unique locking system using stainless steel teeth grips the pipe and an 'O' ring provides a leak proof seal. The fittings can be disconnected and used again without the need for replacement parts.

Installing Speedfit requires no tools and only your hands are needed, making Speedfit a truly DIY plumbing system. The low insertion force needed to make a connection means Speedfit is especially easy to install in hard to reach spaces and your installation is greatly enhanced by the clean, all white appearance of the pipe and fittings.

Speedfit fittings are suitable for both copper and Speedfit pipe. The range also includes unique white flexi hoses, ideal for plumbing in new taps, mixers or toilets as well as a variety of shut off valves and appliance taps for the easy installation for washing machines and dishwashers.

### Features and Benefits include:

- **SABS APPROVED** to SANS 21003
- **Low heat loss** from pipe **saves electricity**
- **No tools needed** to make a connection
- **Installation time reduced by 50%** or more
- **No risk of fire or flames** from a blowtorch
- **Corrosion free** and **no scale build up**
- **Lead free** and **non toxic**
- **Better for the environment** than metal systems
- **25 Year manufacturers guarantee**
- **Manufactured in the United Kingdom**
- **Service life of more than 50 years**



SANS 21003



# Practical DIY Tips

*Just use your hands!*

## Connecting Washing Machines and Dishwashers

The plumbing of a washing machine or dish washer could not be easier when you use the Speedfit Appliance Tap or appliance tee. The supply pipe, fitted with a pipe insert, is pushed into the Appliance Tap to provide a permanent leak proof seal. No tools needed – all you need is your hands.

The plastic thread on the outlet makes for an easy connection to the plastic thread on the hose. A large round handle makes an easy grip on/off control for when maintenance is needed on the appliance.



## Replacing Braided Flexi Hoses Under Sinks & on Toilets

The unique white Speedfit flexi hose means you only need a simple hand tightening operation to connect up a Tap or mixer to a water supply. Useful when replacing Existing brassware in confined spaces. Flexi hoses are ideal for connecting to the toilet supply and there are versions with built in shut off valves.



## Creating a Temporary or Permanent Shut Off

The unique feature of the Speedfit concept, the ability to easily connect and disconnect the fitting should you want to means the Speedfit Stop End not only provides a permanent leak proof seal but can also be used to give a temporary shut off to allow for a job to be interrupted and the water turned back on over night for instance, or if the job has to be interrupted for any other reason.

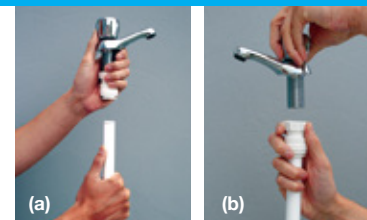
With Speedfit Stop Ends there is not need for tools, sweating or threading. They can be used with copper pipe, and are re-usable many times over.

A must for your toolbox!



## Connecting Pillar Taps

The unique Speedfit Tap Connector means you only need a simple hand tightening operation to connect a tap or mixer to a water supply. Useful when replacing existing brassware in confined spaces such as under a sink or bath. An integral seal within the product avoids the need for further sealants.



Because of the ability of Speedfit Fittings to be twisted while connected to the pipe, there are two ways of installing the tap connector. Either (a) screw the connector onto the tap and then fit the pipe or (b) push the pipe into the connector and screw the connector onto the tap.

# Technical Checklist

- **Handling Speedfit:**
  - Ensure fittings and pipe are kept clean at all times by keeping them in the bags provided.
  - Do not empty Speedfit products onto the floor area.
  - Ensure internal 'O' Ring seals are kept free from dirt and debris.
- **Available Sizes:** 15mm and 22mm.
- **Pipes:** Speedfit fittings can be used with:
  - Copper pipe to SABS 460
  - Speedfit Barrier Pipe to SANS 21003-1,2,3&5:2008

Speedfit fittings can also be used with other plastic pipes of 15mm, 22mm and 28mm diameters such as Polycop. Speedfit fittings **cannot** be used on stainless steel pipe.

### Working Temperatures and Pressures:

Application	Usual working temperature, °C	Maximum working temperature, °C	Maximum working pressure, bar
Cold Water	20	20	12
Central Heating	82	105	3
Hot Water	65	95	8

Speedfit Barrier Pipe will withstand pressures well in excess of normal service conditions. SABS ratings are 12 BAR at 20°C, 8 BAR for 15mm; and 6 BAR for 22mm and 28mm at 95°C.

- **Maximum Temperatures:** Speedfit Barrier Pipe can withstand 114°C intermittently for short periods. The Speedfit system should not be used on an uncontrolled heat source such as a solar panel.

- **Insulation:** Same as copper. Speedfit Barrier Pipe can withstand lower temperatures than copper which reduces the chances of bursting due to the flexibility of the pipe.
- **Flow Rates:** Comparable with metal systems. Flow rates do not diminish over time as is the case with metal systems through corrosion and other build ups.
- **Paint and Chemicals:** Use only water or oil based paint. **DO NOT ALLOW CONTACT** with oil based jointing compounds, cellulose based paints, paint thinners, paint strippers, solder flux, acid based descalants or aggressive cleaning products.
- **Solder Flux:** No fluxes of any type should come into contact with Speedfit pipe and fittings. If fluxes are to be used in an environment where Speedfit is installed, then extreme care should be taken to ensure that no such contact takes place.
- **Chlorine:** Speedfit is not suitable for use in systems where the water contains high levels of chlorine e.g. swimming pools, fountains etc.
- **Exposure to Sunlight:** Speedfit products, when used indoors, are not affected by sunlight. When used outdoors protect from ultra violet light by lagging or painting.
- **Pipe Clips:** Pipe clips should not be fitted any closer than 60mm from the end of the fitting. Pipe should be adequately supported by pipe clips to prevent undue stress (side load) on fittings.
- **Pipe Inserts:** Must be used on all installations when using plastic pipe and should be fully inserted. Only use a Speedfit Insert with Speedfit pipe. There is no need for an insert on copper pipe.
- **Connection to Geysers:** A minimum 1000mm run of copper pipe should be installed between the geyser and the Speedfit system.